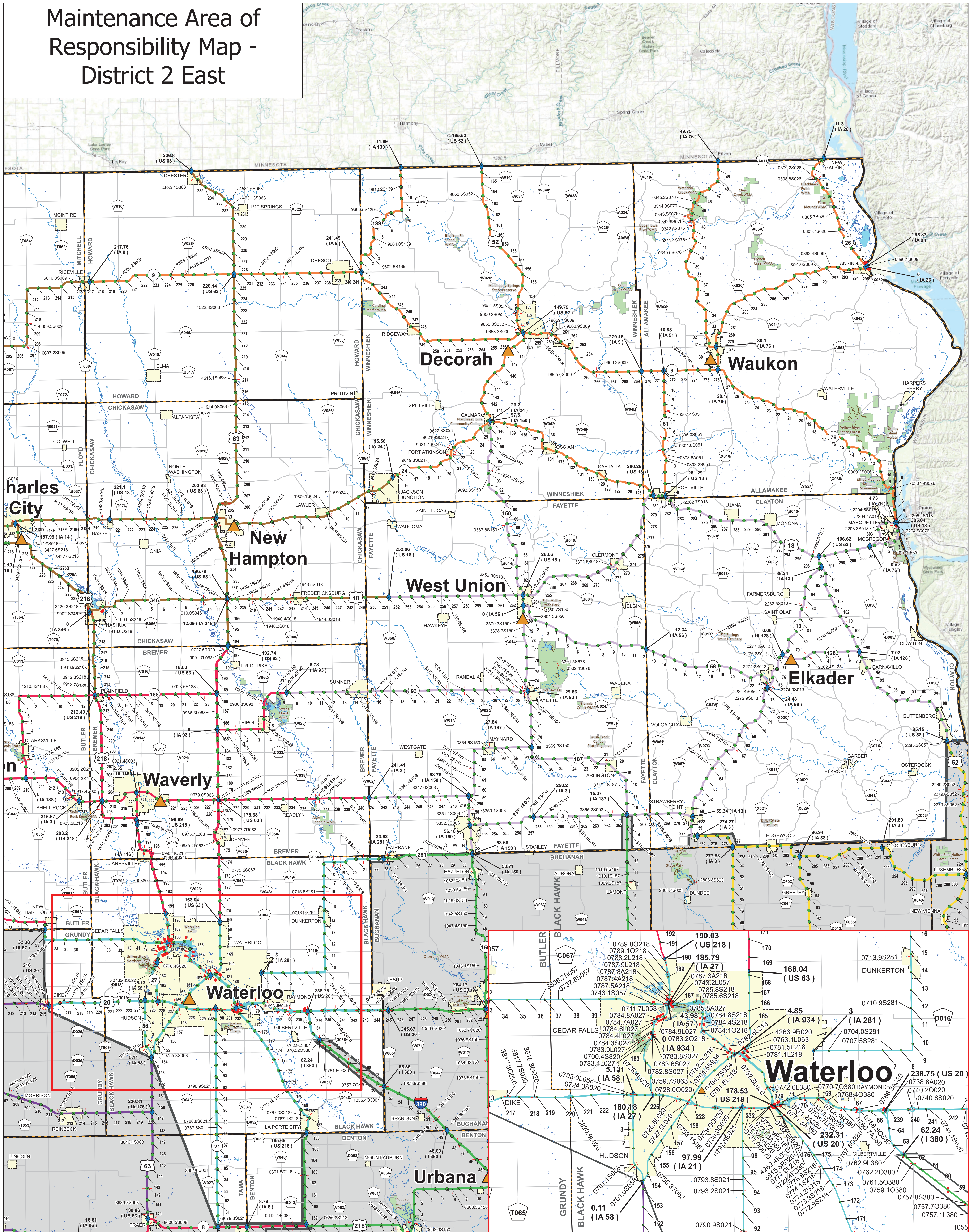


Maintenance Area of Responsibility Map - District 2 East



As of: 31 July 2018
 Scale: 1: 155,000
 Projected Coordinate System: LRS Lambert
 Projection: Lambert Conformal Conical
 Geographic Coordinate System: GCS North American 1983
 Datum: D North American 1983
 Spheroid: GRS 1980
 Extents: (Top) 43.69° (Bottom) 42.18°
 (Left) -92.71° (Right) -91.03°
 Project Location: W:\Highway\Maintenan e\GIS\Projects\AreaResp osibility\Maps\Big District Maps\District 2ID2_Split



Legend

- ▲ Garages
- Bridges
- ◆ Mileposts
- Reference Posts
- County Boundaries
- County Roads
- Lakes
- Rivers
- State Parks
- Corporation Boundaries
- Maintenance District Boundaries

